

**Sinoriko<sup>®</sup>**

E-mail: [support01@sinoriko.com](mailto:support01@sinoriko.com)

Web: [www.sinoriko.com](http://www.sinoriko.com)



# CPAP Cleaner and Sanitizing Machine

- UV & Ozone Dual Mode  
(All PAP device or other items are available)

## Operating Manual

Please ensure you read this manual thoroughly before use.

Do not disassemble or modify any parts of this device by yourself.

Repairs by non-professionals are strictly prohibited.

If any failure occurs during operation, please contact us.

**E-mail:** [support01@sinoriko.com](mailto:support01@sinoriko.com)

**Web:** [www.sinoriko.com](http://www.sinoriko.com)



# Table of Contents

<b>01. Introduction</b>	-----1	<b>13. Use and Care</b>	-----24
<b>02. Safety Precautions</b>	-----2	<b>14. Disposal</b>	-----24
<b>03. Quick Start Guide</b>	-----3	<b>15. Guarantee and Warranty</b>	-----25
<b>04. Installation Instructions</b>	-----6	<b>16. Contact Us</b>	-----26
<b>05. Touch Panel Operating Instructions</b>	--11		
<b>06. Operating Instructions</b>	-----15		
<b>07. Indications For Use</b>	-----17		
<b>08. Contraindications for Use</b>	-----17		
<b>09. Troubleshooting</b>	-----18		
<b>10. FAQ</b>	-----20		
<b>11. Specifications</b>	-----22		
<b>12. FCC Notice</b>	-----23		

# 01 Introduction

Thank you for using the SINORIKO machine.

SINORIKO is a CPAP cleaner with ozone and UV-C dual disinfection.

UV-C light directly irradiates the surface of the CPAP accessories, effectively disrupting the DNA structure of microorganisms and rapidly eliminating pathogens exposed to the light. Ozone gas can penetrate hard-to-reach areas within the CPAP equipment, such as the interior of tubing and the crevices of masks, eradicating hidden bacteria and odors.

This product not only cleans your CPAP accessories, but can also be used as a multi-purpose disinfection device for other personal care products. (i.e. electric toothbrush, toys, cell phones, etc).

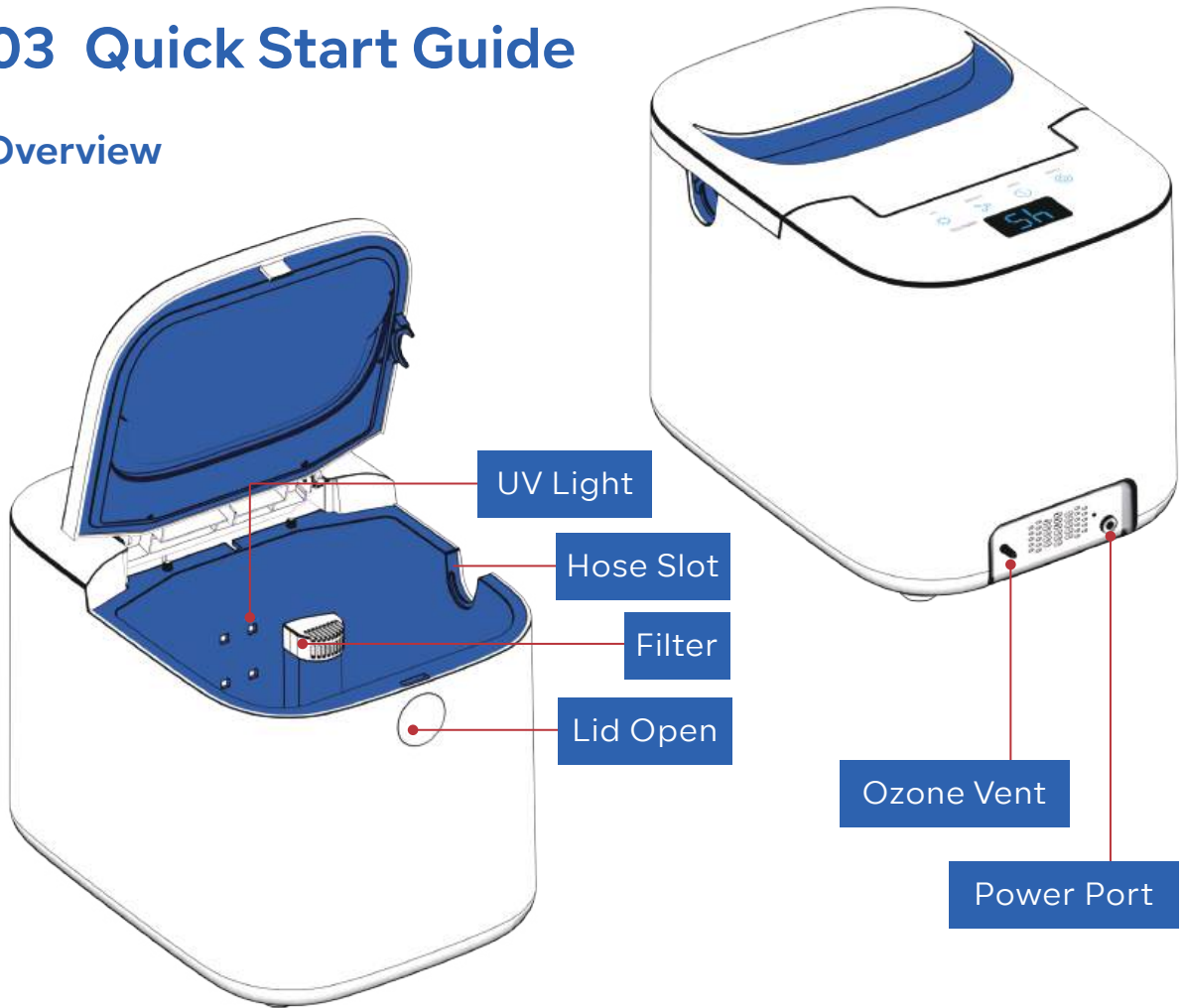
## 02 Safety Precautions

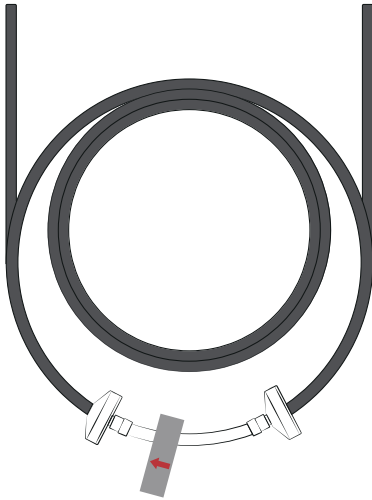


- Keep the device out of the reach of children.
- Do not touch or inhale ozone directly.
- Always keep the lid of the device closed and the ozone tube leak-free during the entire working process.
- If the OZONE mode is suddenly interrupted, wait 2 hours before reopening the lid or restarting the operation.
- If you accidentally inhale high concentrations of untreated ozone or experience symptoms such as headaches, coughing or shortness of breath, leave the room for 4 hours.
- The UV that is emitted in the closed chamber is not compatible with life, never place living creatures in the SINORIKO.
- The device was designed to shut off automatically when the lid is open. It is important not to defeat or tamper with this safety feature as UVC light can cause damage to eyesight. And inhaling large amounts of ozone can also cause temporary discomfort.
- If the device is dropped, it may be damaged. Check the device regularly for physical damage, such as cracks or structural damage, and breaks in the ozone tube or sleep device hose. If damage is detected, stop using it and contact SINORIKO for assistance.
- To reduce the chance of a tripping hazard, keep your sleep device and SINORIKO and all cords, tubes, and hoses out of areas where you might walk.

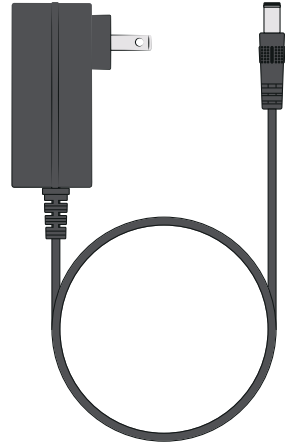
# 03 Quick Start Guide

## Overview

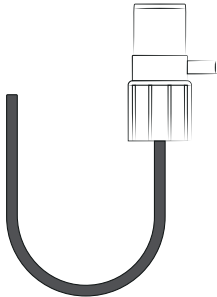




Ozone Tube



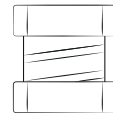
Power Cord



3-port Connector

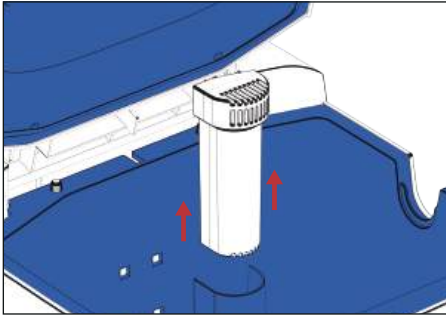


2-port Connector



Hose Sleeve

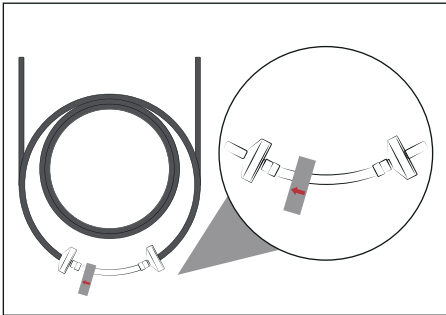
## Replaceable Parts



### Filter

This filter converts activated oxygen back into normal oxygen.

Recommended replacement every 6 months. To replace the filter, open the lid, firmly pull the old filter upwards to remove it, and then install the new filter.



### Check Valve

Prevents water in your humidifier reservoir from backing up into your SINORIKO machine.

If you can see water in the clear tube, replace the check valve assembly immediately.

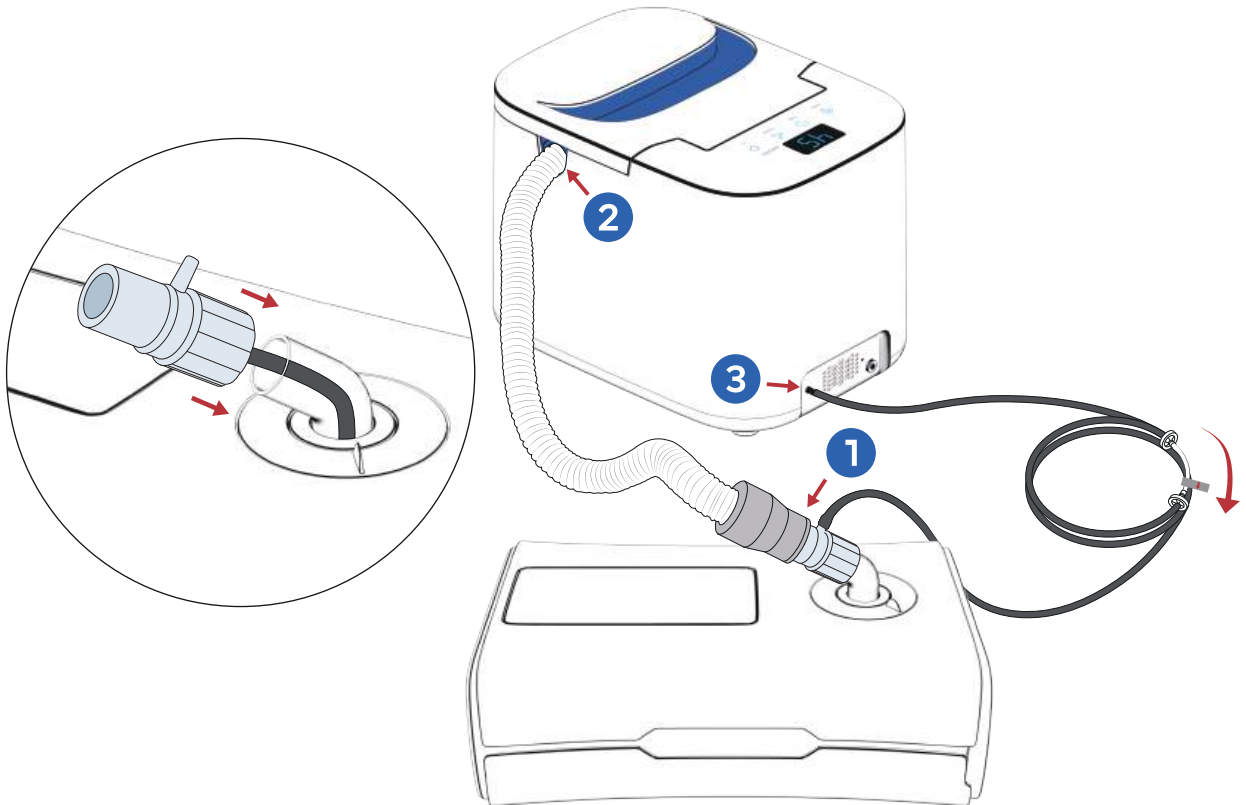
Recommended replacement every 6 months.

If you need to purchase any of the above parts, please contact us at [support01@sinoriko.com](mailto:support01@sinoriko.com) or visit our website at [www.sinoriko.com](http://www.sinoriko.com)

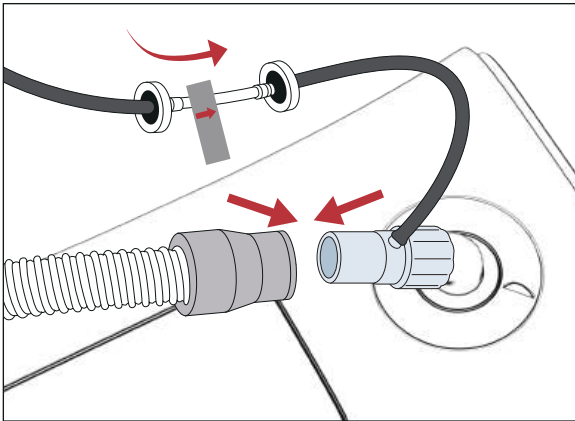


# 04 Installation Instructions

## Mode 1: Maintain your CPAP machine and accessories



- 1 Use the 3-port connector to connect the CPAP tube, ozone tube, and CPAP machine. Insert the end of the connector with the black tube into the CPAP machine. The other end is connected to the CPAP tube. The thinnest end is connected to the ozone tube.
- 2 The other end of the CPAP tube is placed into the hose slot on the side of the SINORIKO machine.
- 3 The other end of the ozone tube is connected to the ozone vent on the back of the SINORIKO machine.



**NOTE:**

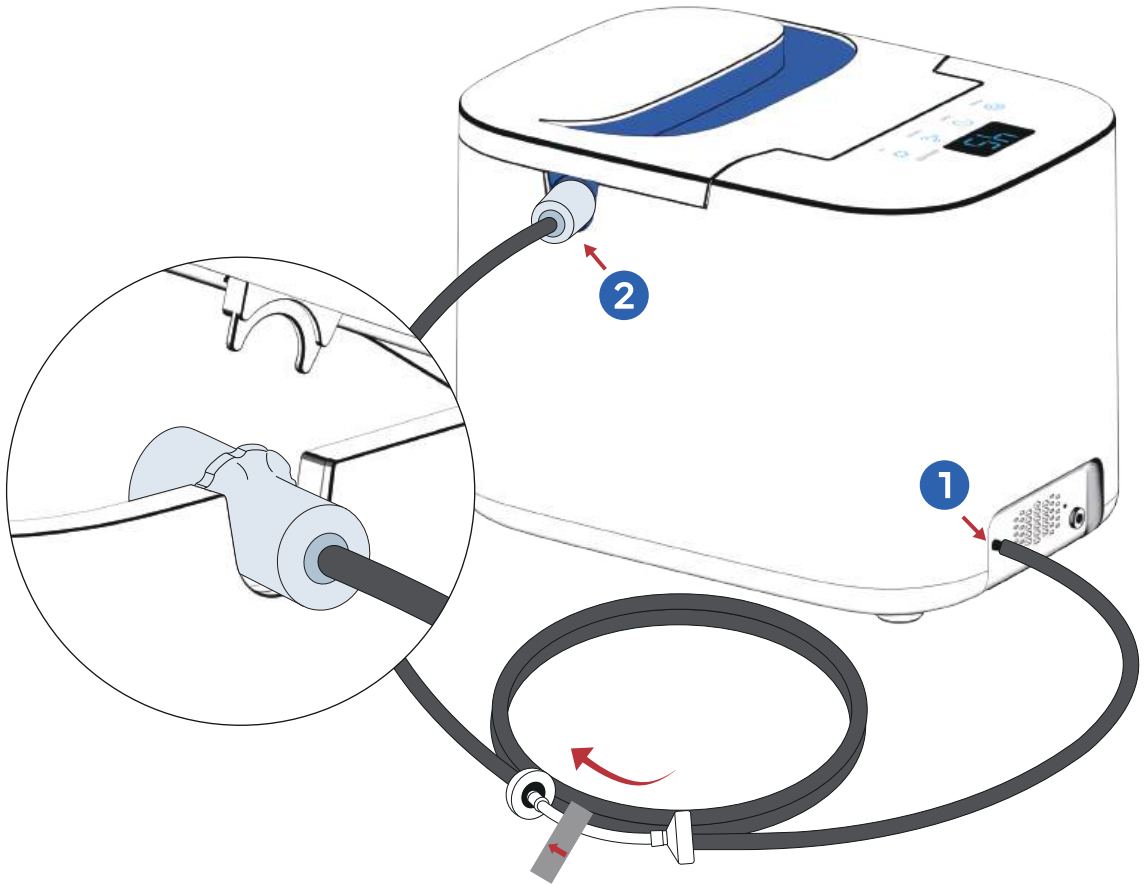
The ↑ arrows on the check valve tag should point towards the CPAP machine.



**NOTE:**

Before the machine starts working, make sure that both ends of the ozone tube are properly connected. This prevents ozone from being inhaled by the human body and causing harm.

## Mode 2: Maintain other items



- 1 Use the 2-port connector to connect one end of the ozone tube to the hose slot on the side of the SINORIKO machine.
- 2 Connect the other end of the ozone tube to the ozone vent on the back of the SINORIKO machine.
- 3 Put your other items into the SINORIKO machine, such as electric toothbrushes, toys, mobile phones, etc.



**NOTE:**

The ↑ arrows on the check valve tag should point towards the SINORIKO machine.

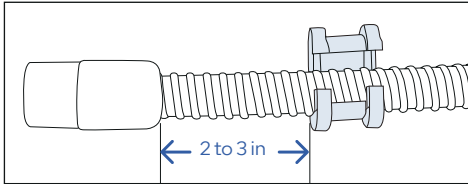


**NOTE:**

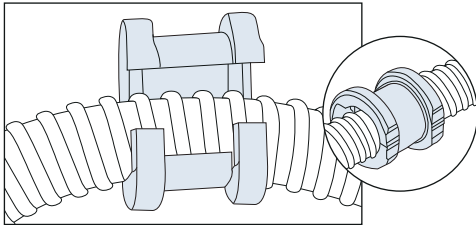
Before the machine starts working, make sure that both ends of the ozone tube are properly connected. This prevents ozone from being inhaled by the human body and causing harm.

## Using the hose sleeve (Optional)

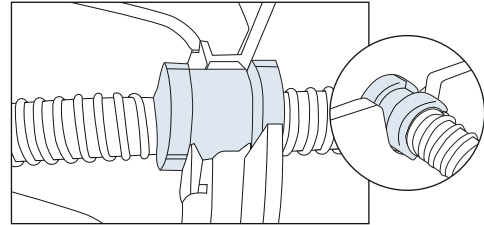
If there is visible space around the hose when placed in the hose slot, you may be using a 15 mm hose and require the hose sleeve be installed.



1. Position the hose sleeve 2 to 3 inches from the connector.



2. Position the CPAP hose on the Nub side of the hose sleeve. Slide the CPAP hose until the sleeve "clicks" into place between two of the hose ribs and close the sleeve.

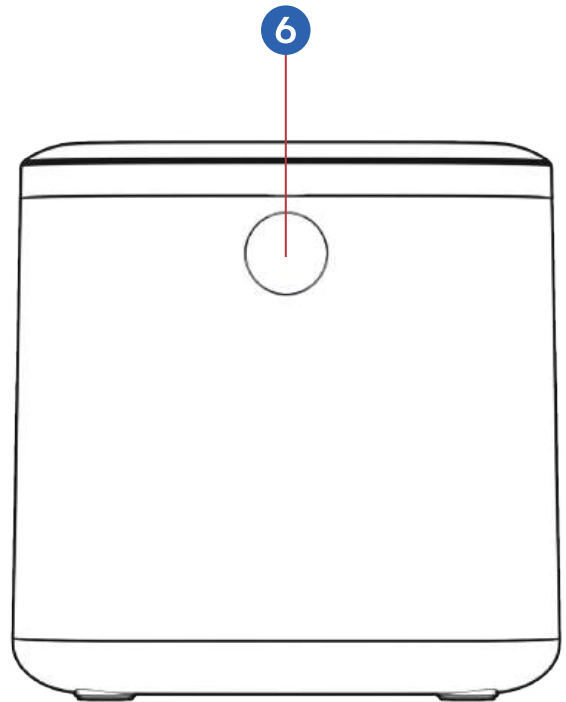
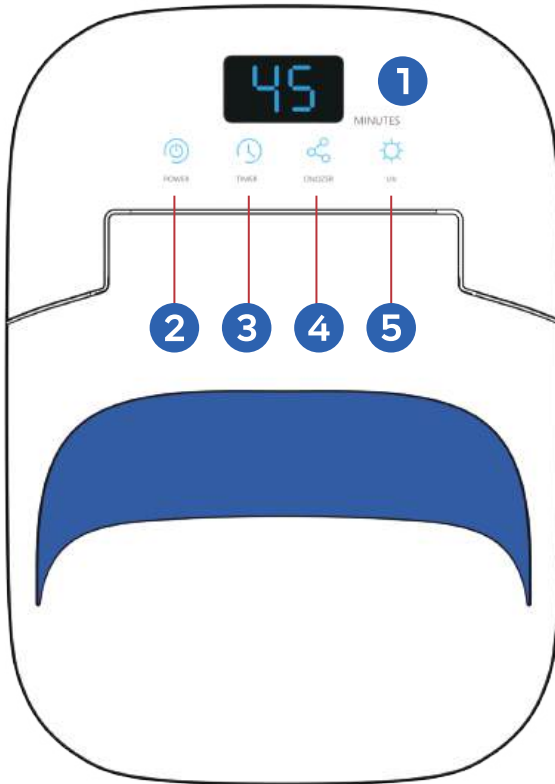


3. Place the hose sleeve into the hose slot and close the lid.

### **NOTE:**

The hose sleeve is required if you use a 15 mm hose. It may not be compatible with hoses of other diameters.

# 05 Touch Panel Operating Instructions



Number	Button	Description
1	MINUTES	The display shows a countdown. The default is 45 minutes.
2	POWER	Long press for 2 seconds to turn on or off. Short press to start/pause.
3	TIMER	After the timer ends, you'll hear a beep, and the machine will automatically shut down.
4	OZONE	You must select one of the OZONE and UV buttons and then press POWER to start working. Or select them at the same time.
5	UV	You must select one of the OZONE and UV buttons and then press POWER to start working. Or select them at the same time.
6	LID OPEN	If the lid is opened suddenly during operation, the cleaning machine will automatically stop working and all buttons will be unavailable. It will resume normal operation automatically after the lid is closed.

## Maintenance Time Parameters

	Ozone Mode	UV Mode	Ozone+UV Mode
Ozone/UV running duration (minutes)	10	5/10/15/20	10
Stationary state (minutes)	20/30/40/50	0	20/30/40/50
Fresh air duration (minutes)	15	0	15
Total maintenance time (minutes)	45/55/65/75	5/10/15/20	45/55/65/75



When the machine is in a stationary state, the air pump will stop working and the timer indicator will continue to flash. You will not hear the sound of the air pump at this time, but the machine is still in working condition. Do not open the lid to prevent ozone leakage and harm to the human body.

A period of stationary state ensures that the ozone performs its function and dissipates appropriately.

The SINORIKO machine will run the air pump during the last 15 minutes of maintenance time to pass fresh air through the system. This will accelerate the conversion of ozone into ordinary oxygen within the device.



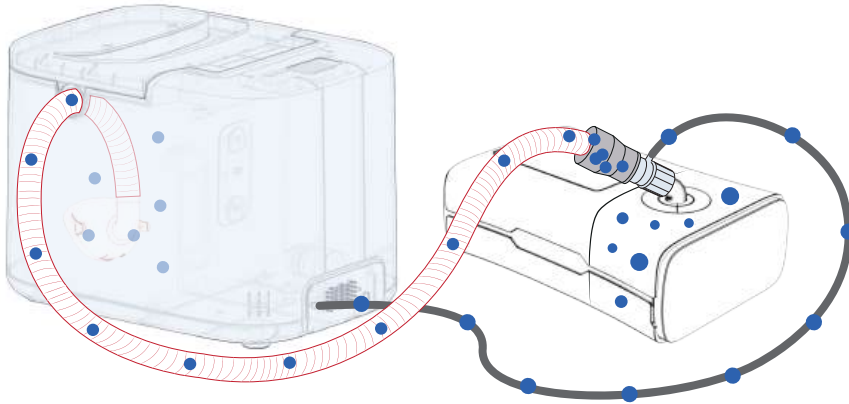
**NOTE:**

SINORIKO machine should be operated in a well ventilated room.

People leave the room during the maintenance cycle.

Wait a minimum of 30 minutes between completion of the maintenance and use of the CPAP mask and hose.

# 06 Operating Instructions



1. Refer to the installation instructions and install the accessories that come with the SINORIKO machine.
2. Plug the power cord into the power port on the back of the SINORIKO machine and then into a wall outlet.
3. Open the lid and put the mask and accessories into the SINORIKO machine. The inner side of the mask and accessories should be placed towards the UV lamp beads as much as possible to obtain maximum UV penetration. If you do not choose UV mode, you do not need to do this. When you choose the ozone mode, the gas released by the SINORIKO machine will penetrate deeply into every corner of the items.

**NOTE:** If your mask or accessories are visibly soiled please first wipe thoroughly with a damp cloth or a CPAP wipe.

4. Close the lid. Long press the POWER button for 2 seconds to turn on the machine, and then select OZONE or UV. (You must select one of them).
5. Select a timer.
6. Short press the POWER button. The machine starts working. If you want to stop working, short press the POWER button again. To shut down the machine, long press the POWER button.
7. After the timer ends, the maintenance cycle is completed.  
Open the lid and take out the items.



**NOTE:** Before use this cleaning machine. wash, rinse, and dry your hose and mask as recommended by the manufacturer.

Our cleaning machine should be used as a supplement to your cleaning routine, not a replacement.

Washing removes oils, films, debris and other build up that can naturally form on your mask and hose from use.



**NOTE:** Once the maintenance cycle is complete and you are ready to use your CPAP hose and mask, wait a minimum of 30 minutes between completion of the Cycle and use of the CPAP mask and hose.

## 07 Indications For Use

The SINORIKO is a device intended to disinfect Continuous Positive Airway Pressure (CPAP) accessories, including mask and water chamber. A person using a CPAP device to treat Obstructive Sleep Apnea (OSA) may use SINORIKO to sanitize their mask and water chamber to augment their CPAP equipment manufacturer's recommended cleaning instructions. The SINORIKO is intended for home use. It may also be useful as a multi-purpose disinfecting device for other personal care products (i.e. electric toothbrush, toys, cell phones, etc).

### **Warning**

Do not attempt to operate this device with the lid open. The device was designed to shut off automatically when the lid is open. It is important not to defeat or tamper with this safety feature as UVC light can cause damage to eyesight. And inhaling large amounts of ozone can also cause temporary discomfort.

## 08 Contraindications for Use

Persons with underlying lung diseases, such as asthma and chronic obstructive pulmonary disease (also known as COPD, which includes emphysema and chronic bronchitis), and those with cardiovascular disease may be sensitive to ozone and should consult with their health care professional before using this product.

### **Warning**

The safety of this product in pregnant or breastfeeding women and children has not been established. Consult with your healthcare professional before use.

# 09 Troubleshooting

PROBLEM	SOLUTIONS
Power button does not work	You must select one of the OZONE and UV buttons and then press POWER to start working.
All buttons don't work	Check that the lid is closed properly.
The timer button is flashing and the machine is silent.	This is normal. The air pump does not need to run in UV mode. In Ozone mode, the air pump runs at the beginning and 10 minutes and the last 15 minutes.
There is a noticeable scent in your mask after using SINORIKO	Your mask and hose may contain fragrance or impurities. Regularly wash your hose and mask according to the manufacturer's instructions.  Use unscented CPAP wipes after Maintenance Cycle.

PROBLEM	SOLUTIONS
<p>Your mask is discoloring</p>	<p>Wash, rinse and dry your CPAP hose and mask the way the manufacturer recommends.</p> <p>Replace your CPAP mask at the manufacturer's recommended interval.</p>
<p>There is a noticeable odor of ozone or unfamiliar odor or you experience headaches/ migraines, or symptoms such as cough or discomfort in your nose or throat during Maintenance Cycle</p>	<p>Make sure the ozone tube is connected properly and there is no gas leakage.</p> <p>The machine should be placed in a well-ventilated space and people need to leave the room when it is running.</p> <p>Wait a minimum of 30 minutes between completion of the maintenance and use of the CPAP mask and hose.</p> <p>If you feel uncomfortable, leave the room for 4 hours.</p>

# 10 FAQ

## 1. Why should I disinfect my mask and water chamber?

Moisture left in your mask or humidifier becomes a breeding ground for bacteria, germs and mold. Keeping your CPAP mask and humidifier free of harmful germs and bacteria helps avoid getting sick from a dirty CPAP.

## 2. Will my CPAP machine be wet from the SINORIKO?

No. The SINORIKO disinfects with activated oxygen and UV-C light. No fluids or water are used in this process.

## 3. Is the ozone produced by SINORIKO harmful to me or the environment?

No. Ozone is also called active oxygen. The same sanitizing technology is safely used on produce and drinking water. SINORIKO generates active oxygen in a closed system.

The active oxygen disinfects your equipment. During the last 15 minutes of the maintenance cycle, the air pump inputs fresh air into SINORIKO. The active oxygen in the machine passes through the filter and is converted back into ordinary oxygen before being released.

## 4. How do I know if the disinfection is complete?

During the disinfection process, the timer button will keep flashing. When the disinfection is complete, the machine will make a beeping sound and automatically shut down. This means that the disinfection process has ended.

## 5. How does UV mode work?

UV mode disinfects by emitting a narrow spectrum of high-energy light, known as UV-C. It is designed to produce the highest amount of UV energy - 90% of which is produced at around 254nm. This light is very close to the peak of the germicidal effect curve at 265nm, which is the most lethal wave to microorganisms.

The dose of UV-C emitted in just a few minutes is enough to kill most bacteria and mold on a surface.

Because UV-C disinfection involves light waves, it operates in "line of sight" fashion, only irradiating surfaces within its sightlines. If there is heightened need for disinfection, the mask can be disassembled or a second cycle used after flipping the object over. For general daily use, only one cycle is necessary.

## 6. What if the scent the SINORIKO leaves is too strong for me?

- (1) Before wearing your mask at bedtime, run your CPAP for 30 seconds to allow any residual scent to blow out.
- (2) Try to disinfect your CPAP equipment early in the day to allow any lingering odors to dissipate before evening.

## 7. How often do I need to replace consumables?

Normally, if you use SINORIKO every day. We recommend to renew the filter every 6 months. If you see water in the clear tube, replace the check valve immediately.

To reorder, please contact your seller or visit [www.sinoriko.com](http://www.sinoriko.com)



# 11 Specifications

Product name	CPAP Cleaner
Model	UO-X1
Item Dimensions	7.96 x 11.1 x 7.96 inch
Weight	3.6 lbs
Working Technology	UV + Ozone Mode
Ozone Output	80-100 mg/h
UV LED Power	3W
Adaptor Input	AC 100 ~ 240 V, 50/60 HZ
Adaptor Output	DC 12 V, 2 A Max
Operating Temperature	50°F to 100°F (10°C to 38°C)
Operating Humidity	15% to 75%
Area of Intended Use	Indoor
Sound Level	About 30 dB

# 12 FCC Notice

This equipment has been tested and found to comply with the limits for a Class B digital device, pursuant to part 15 of the FCC Rules. These limits are designed to provide reasonable protection against harmful interference in a residential installation.

This equipment generates, uses and can radiate radio frequency energy and, if not installed and used in accordance with the instructions, may cause harmful interference to radio communications. However, there is no guarantee that interference will not occur in a particular installation.

If this equipment does cause harmful interference to radio or television reception, which can be determined by turning the equipment off and on, the user is encouraged to try to correct the interference by one or more of the following measures:

- Reorient or relocate the receiving antenna.
- Increase the separation between the equipment and receiver.
- Connect the equipment into an outlet on a circuit different from that to which the receiver is connected.
- Consult the dealer or an experienced radio/TV technician for help.

## 13 Use and Care

Please note that SINORIKO has sensitive electronic components inside. If you need to clean the machine, use a slightly damp soft cloth to clean the outside of the machine.

Never use abrasive cleaners or immerse the device in water or any other liquid.

This device cannot be sterilized by any liquid or autoclave method.

## 14 Disposal

Please do not dispose of this device with other household waste. Instead, it is your responsibility to dispose of your waste equipment by handing it over to a designated collection point for the recycling of waste electrical and electronic equipment.

The separate collection and recycling of your waste equipment at the time of disposal will help to conserve natural resources and ensure that it is recycled in a manner that protects human health and the environment. For more information about where you can drop off your waste equipment for recycling, please contact your local city office or your household waste disposal service.

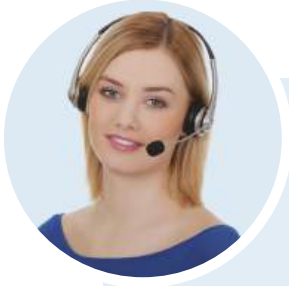
# 15 Guarantee and Warranty

We offer a 2-year warranty from the date of purchase for quality issue of device. We will replace device or parts as per exact condition.

## Conditions not covered by warranty:

- Replacement filter and check valve. The machine's filter and check valve are not covered by the warranty.
- Use of the machine other than for normal domestic purposes, e.g. for commercial or rental purposes.
- Use of parts not produced or recommended by SINORIKO.
- Disassemble any part of the unit without our permission.
- Operations go against the instructions.
- Inappropriate use.
- Normal wear and tear.

# 16 Contact Us



After-sales email: **support01@sinoriko.com**

Manufacturer: Shenzhen Sinoriko Technology Co., Limited

Address: A702, Zihui Innovation Center, QianJin Second Road, Bao'an, Shenzhen, China

For more information about SINORIKO,  
please visit **www.sinoriko.com**

